

# LOTURA-BATURA

AITOR URQUIZA CIRAUQUI

-NAK 2021-

Bi musikarientzako obra: Txistu, txirula, tamboril, ttun-ttun, bonbete eta akordeoiarentzat

Obra para dos músicos: Txistu, txirula, tamboril, bombete, salterio y acordeón

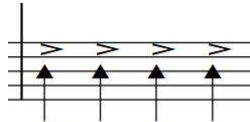
Irudiak/Imagen: Miren Karmele Gómez Garmendia

## INDICACIONES

### Txistu

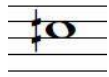


Sonido más agudo posible. Con todos los agujeros abiertos.



*f* > *simile*

Sonido de aire. Tapar con los dedos el bisel realizando la nota marcada.



Cuarto de tono ascendente. +50 cents aprox.



Cuarto de tono descendente. -50 cents aprox.

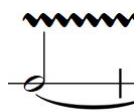


Box de sonidos. Serie de sonidos interpretados con una medida ad libitum pudiendo repetir nota. Sensación de inestabilidad.



Box de dinámica. Realización de la dinámica escrita pudiendo repetirse y variar la duración. Sensación de inestabilidad.

### Percusión



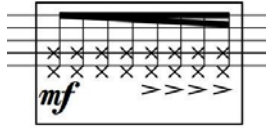
Hacer movimientos circulares con la baqueta sobre el parche.



Rebotar la baqueta contra las cuerdas imitando un redoble.



Presionar la baqueta contra las cuerdas, desafinando las notas.



Golpear en el puente inferior del salterio, haciendo sonar tanto el golpeo de la baqueta contra el puente como las cuerdas por la vibración generada.

Sult pont. Sult ponticello. Golpear en la zona cercana al puente inferior.

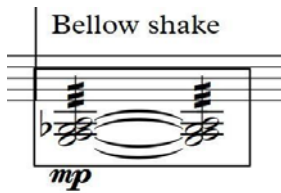
Sul tasto. Golpear en la zona intermedia del salterio.

Sul pont. → Sul tasto



Golpear y presionar las cuerdas cerca del puente y progresivamente (glissando) ir moviendo la baqueta hasta la zona sul tasto.

## Acordeón



Bellow shake de velocidad irregular. Buscar aleatoriedad.



Ejecutar lo más rápido posible.

# LOTURA-BATURA

(Ainara Martinez eta Xabier Olazabali eskaina)

Aitor Urquiza  
(2021 Maiatza)

**System 1:**

- Tempo:** ♩ = 60
- Txistu:** Bass clef. Starts with a half note, followed by quarter notes, then a triplet of eighth notes, and a five-measure phrase. Dynamics: *cresc.*, *f*.
- Tambor grave:** Drum notation with a half note and a quarter note. Dynamics: *f*.
- Acordeón:** Treble and Bass clefs. Treble clef has a half note. Bass clef has a half note. Dynamics: *cresc.*, *fp*. Includes a *Bending pp* instruction.

**System 2 (Measures 9-15):**

- Measures 9-10:** Tx. (Bass clef) has a half note. Tamb. (Drum) has a half note. Acordeón (Bass clef) has a half note. Dynamics: *fp*.
- Measures 11-15:** Tx. (Bass clef) has a half note. Tamb. (Drum) has a half note. Acordeón (Bass clef) has a half note. Dynamics: *f*, *mp*, *f*, *pp*. Includes a *bending* instruction.

**System 3 (Measures 16-22):**

- Measures 16-17:** Tx. (Bass clef) has a half note. Tamb. (Drum) has a half note. Acordeón (Bass clef) has a half note. Dynamics: *p*, *cresc.*, *fp*.
- Measures 18-22:** Tx. (Bass clef) has a half note. Tamb. (Drum) has a half note. Acordeón (Bass clef) has a half note. Dynamics: *f*, *p*, *cresc.*, *f*, *p*. Includes a *Bending* instruction and a *Bellow shake cresc.* instruction.

2 25

Tx. *f* *pp*

Bmb. Tamboril *f*

Acord. *f* *pp* bending

30 frull *f* *mf* *pp* *mf*

Tam. *f* *pp* *mf*

Acord. *mf* *mf* *mf*

32

Tx. *f*

Tam. *f*

Acord. *f*

34

Tx. *f* *mf*

Tam. Tambor grave *f* Tamboril *mf*

Acord. *f* *mf*

36

Tx.

Tam.

Acord.

38

Tx.

Tambor grave Tamboril

Tam.

Acord.

*f* *mf*

40

Tx.

Tambor grave Tamboril

Tam.

Acord.

*f* *mf*

42

Tx.

Tam.

Acord.

*pp*

43

Tx. *ff* 5 5

Tam. *f* Tambor grave

Acord. *ff* 5 3 5

44

Tx. 3

Tam. *f* 8va

Acord. *f* 3

45

Tx.

Tam. *mf* tamboril

Acord. *mf*

46

Tx. 15

Tam. *f* Tambor grave

Acord. *pp* 15 *f*

47

Tx. *ff* *pp*

Tam. Tambor grave

Acord. *ff* *pp* 8<sup>va</sup>

48

Tx. *mp* 5

Tam.

Acord. *mp* 8<sup>va</sup>

50

Tx.

Tam. Tambor grave *f* *f* 8<sup>va</sup>

Acord. *ff* 3 5 5

51

Tx.

Tam.

Acord. 8



52

Tx.

Tam. *tamboril*

Acord.

*mf*

*pp*

Detailed description: This system covers measures 52 and 53. The Tx. part features a melodic line starting with a sharp and a flat, moving through various intervals. The Tam. part plays a rhythmic pattern labeled 'tamboril'. The Acord. part consists of two staves; the right hand has a complex, fast-moving accompaniment, while the left hand has a more sustained bass line. A piano section marked 'pp' is indicated in the right hand of the Acord. part.

53

Tx.

Tam. *Tambor grave*

Acord.

*f*

*ff*

*8va*

Detailed description: This system covers measures 53 and 54. The Tx. part continues the melodic line. The Tam. part plays a rhythmic pattern labeled 'Tambor grave'. The Acord. part consists of two staves; the right hand has a complex, fast-moving accompaniment, while the left hand has a more sustained bass line. A forte section marked 'f' and a fortissimo section marked 'ff' are indicated in the right hand of the Acord. part. An '8va' marking is present above the right hand of the Acord. part.

54

Tx.

Tam.

Acord.

*pp*

*mp*

*8*

Detailed description: This system covers measures 54 and 55. The Tx. part continues the melodic line. The Tam. part plays a rhythmic pattern. The Acord. part consists of two staves; the right hand has a complex, fast-moving accompaniment, while the left hand has a more sustained bass line. A piano section marked 'pp' and a mezzo-piano section marked 'mp' are indicated in the right hand of the Acord. part. An '8' marking is present above the right hand of the Acord. part.

55

Tx.

Tam.

Acord.

*mp*

*ff*

*8va*

Detailed description: This system covers measures 55 and 56. The Tx. part continues the melodic line. The Tam. part plays a rhythmic pattern. The Acord. part consists of two staves; the right hand has a complex, fast-moving accompaniment, while the left hand has a more sustained bass line. A mezzo-piano section marked 'mp' and a fortissimo section marked 'ff' are indicated in the right hand of the Acord. part. An '8va' marking is present above the right hand of the Acord. part.

57

Tx.

Tam. Tamboril

Acord.

*mf*

59

Tx.

Tam.

Acord.

bending

*pp*

*pp*

62

Tx.

Tam.

Acord.

Ttun-ttun

bending

*pp*

*pp*

65 Txirula

Txir.

Ttun

Acord.

frull.

*mp*

*f*

*f*

*f*

*f*

*mp*

*f*

*mp*

*p*

*pp*

Bellow shake

Bellow shake

*mp*

*pp*

70

frull. II *gliss.*

Txir. *mf* *f* *mf* *mp* *p* *pp*

Ttun *mf* *ff* *ff* *mf*

Acord. *mf* *pp*

Sul pont. → Sul tasto Sul tasto → Sul pont.

73

Txir.

Ttun *ff* *mf* *ff* *mf*

Acord. *pp* *pp*

Sul pont. → Sul tasto Sul tasto → Sul pont. Sul pont. → Sul tasto Sul tasto → Sul pont.

75

Txir. *f* *f* *f* *f* *f* *f* *mf* *mp* *p* *pp*

Ttun *mf* *ff*

Acord. *f* *pp*

Bending

Bellow shake

77

frull.  
II  
*gliss.*  
*mf*

frull.  
*mp*

*f* > simile

Txir.

*mf* < *ff* >

*f*

*mp*

Ttun

Bellow shake  
*mp*

Bellow shake  
*mp*

*f* > simile

*f* > simile

Acord.

82

Sul pont. → Sul tasto Sul tasto → Sul pont.

*mf*

*ff* → *mf* → *f*

*f* > simile

*f* > simile

6

15<sup>ma</sup>

6

*mf*

Txir.

Ttun

Acord.

85

frull.

*f* > simile

*f* > simile

*mp*

*mp*

*f* > simile

Bellow shake  
*mp*

Bellow shake  
*mp*

*f* > simile

*f* > simile

Acord.

91

Txir. *mp* *mp* *f > simile*

Ttun

Acord. *mp* *mp* *f > simile*

94

Txir. *f > simile* *f > simile*

Ttun *mp* 5 *mp* 3 *mp*

Acord. *mp* *f > simile* *mp* *f > simile* *mp*

Bellow shake

Tambor grave

100

Txir.

Ttun *mp* 2 *mp* 1

Tam.

Acord. *mf* *legato*

104

Txir. *f* *gliss.* *mp* *mf* *molto espress.*

Ttun *mp*

Tam.

Acord. *mf* *15<sup>ma</sup>* *mp* *f*

108

Txir. *p* *f*

Ttun

Tam.

Acord. *p* *mp*

112

Txir. *mf* *dim.*

Ttun

Tam.

Acord. *mp* *cresc.*

15<sup>ma</sup>

116

Txir. *mp* *mf*

Ttun

Tam.

Acord. *f* *mf*

15<sup>ma</sup>

120 *gliss.*

Txir. *f* *mp*

Ttun

Tam.

Acord. *f* *mf* *mp*

(15) *15<sup>ma</sup>*

123

Txir. *f*

Ttun

Tam.

Acord. *f*

(15) *3*

126

Txir. *mp* *mf* *p* *mf*

Ttun

Tam.

Acord. *mp* *mf* *mp*

*15<sup>ma</sup>* *Bellow shake*

130

Txir. *mf*

Ttun

Tam.

Acord. *mp*

Bellow shake

*mf*

15<sup>ma</sup>

135

Tx. *espress.* *mp*

Tam. *mp*

Acord. *mp*

Tamboril

Bellow shake

141

Tx.

Tam.

Acord.

143

Tx. *cresc.*

Tam.

Acord. *cresc.*



145

Tx.

Tam.

Acord.

147

Tx.

Tam.

Acord.

*f*

149

Tx.

Tam.

Acord.

*espress.*  
*dim.*

151

Tx.

Tam.

Acord.

153

Tx. *mp*

Tam.

Acord. *mp*

156

Tx. *pp* *mp*

Tam.

Acord. *pp* *mp*

